

## SOMALIA

**Country Dialling Code (Tel/Fax): ++252**

**Somali Community Information Centre:** 1 Chippenham Mews, London W9 2AN, UK Tel: (020) 7286 9144 Fax: (020) 7286 5215

**Capital:** Mogadishu **Time:** GMT + 3

**Background:** Intermittent civil war has been a fact of life in Somalia since 1977. In 1991, the northern portion of the country declared its independence as Somaliland; although de facto independent and relatively stable compared to the tumultuous south, it has not been recognized by any foreign government. Beginning in 1993, a two-year UN humanitarian effort (primarily in the south) was able to alleviate famine conditions, but when the UN withdrew in 1995, having suffered significant casualties, order still had not been restored.

**Location:** Eastern Africa, bordering the Gulf of Aden and the Indian Ocean, east of Ethiopia

**Map References:** Africa

**Area:** total: 637,657 sq km, land: 627,337 sq km, water: 10,320 sq km

**Climate:** principally desert; December to February - northeast monsoon, moderate temperatures in north and very hot in south; May to October - southwest monsoon, torrid in the north and hot in the south, irregular rainfall, hot and humid periods (tangambili) between monsoons

**Terrain:** mostly flat to undulating plateau rising to hills in north

**Natural Resources:** uranium and largely unexploited reserves of iron ore, tin, gypsum, bauxite, copper, salt

**Population:** 7,253,137 (July 2000 est.)

**Nationality:** noun: Somali(s), adjective: Somali

**Ethnic Groups:** Somali 85%, Bantu, Arabs 30,000

**Religions:** Sunni Muslim

**Languages:** Somali (official), Arabic, Italian, English

**Economy:** One of the world's poorest and least developed countries, Somalia has few resources. Moreover, much of the economy has been devastated by the civil war. Agriculture is the most important sector, with livestock accounting for about 40% of GDP and about 65% of export earnings. Nomads and semi-nomads, who are dependent upon livestock for their livelihood, make up a large portion of the population. After livestock, bananas are the principal export; sugar, sorghum, corn, and fish are products for the domestic market. The small industrial sector, based on the processing of agricultural products, accounts for 10% of GDP; most facilities have been shut down because of the civil strife. Moreover, in 1999, ongoing civil disturbances in Mogadishu and outlying areas interfered with any substantial economic advance and with international aid arrangements.

**Industries:** a few small industries, including sugar refining, textiles, petroleum refining (mostly shut down)

**Currency:** 1 Somali shilling (So. Sh.) = 100 cents

**Railways:** 0 km

**Highways:** total: 22,100 km, paved: 2,608 km, unpaved: 19,492 km (1996 est.)

**Ports and Harbors:** Bender Cassim (Boosaaso), Berbera, Chisimayu (Kismaayo), Merca, Mogadishu

**Airports:** 61 (1999 est.), Airports - with paved runways: total: 7, over 3,047 m: 4, 2,438 to 3,047 m: 1, 1,524 to 2,437 m: 1, 914 to 1,523 m: 1 (1999 est.) Airports - with unpaved runways: total: 54, 2,438 to 3,047 m: 3, 1,524 to 2,437 m: 12, 914 to 1,523 m: 29, under 914 m: 10 (1999 est.)

**Visa:** required by all except transit passengers continuing their journey by the same or first connecting aircraft, provided holding onward or return documentation and not leaving the airport.

**Duty Free:** goods permitted: 400 cigarettes or 40 cigars or 400g of tobacco; 1 bottle of wine or spirits; a reasonable amount of perfume for personal use.

**Health:** a yellow fever vaccination certificate is required from travellers arriving from infected areas. Malaria risk exists all year throughout the country. Drinking water outside main cities and towns is likely to be contaminated.

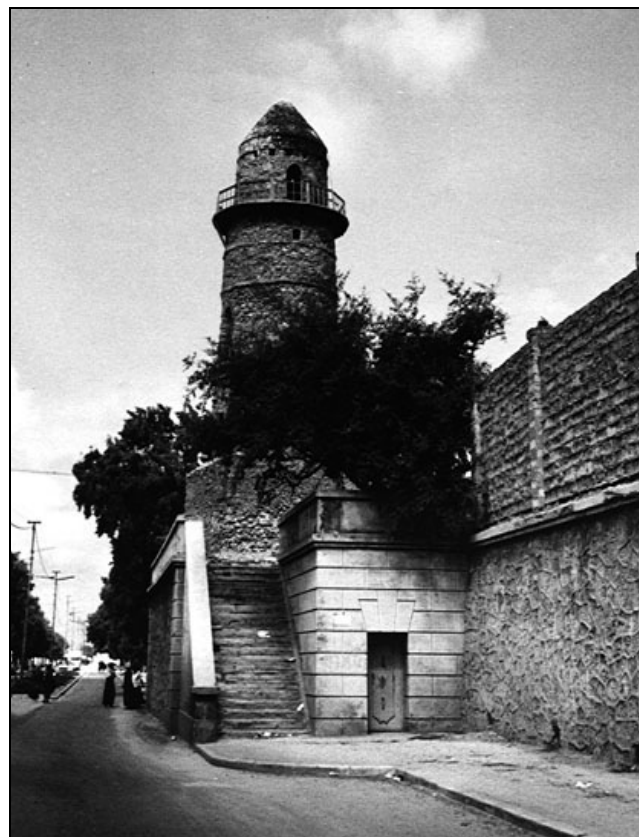
## HOTELS•MOTELS•INNS

**HARGEYSA**

**AMBASSADOR HOTEL HARGEISA,** Airport Road, Hargeisa, Republic of Somalila, Tel: 00 252 29 38895, 00 252 25 66666, Fax: 00 252 29 36026, [info@ambassadorhotelhargeisa.com](mailto:info@ambassadorhotelhargeisa.com) <http://www.ambassadorhotelhargeisa.com>

**MOGADISHU**

**SAHAFI HOTEL,** For booking and reservation, Tel: 32501, 216001 658000, 658001, 32702/3 658002, 658003. Fax: 658004, 32500



**GET READY TO GO WITH THE  
INTERNATIONAL HOTEL AND  
TRAVEL DIRECTORY!  
THE LODGING DIRECTORY  
DESIGNED FOR BUSINESS  
TRAVELLERS!**

## AIRLINES/HELICOPTERS/AIRPORTS

**MOGADISHU INTERNATIONAL AIRPORT**, Somalia, PO Box 310, Mogadishu, Tel: +252 80839, +252 80531